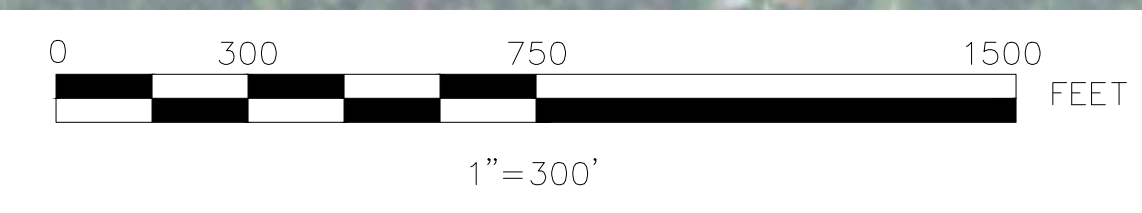
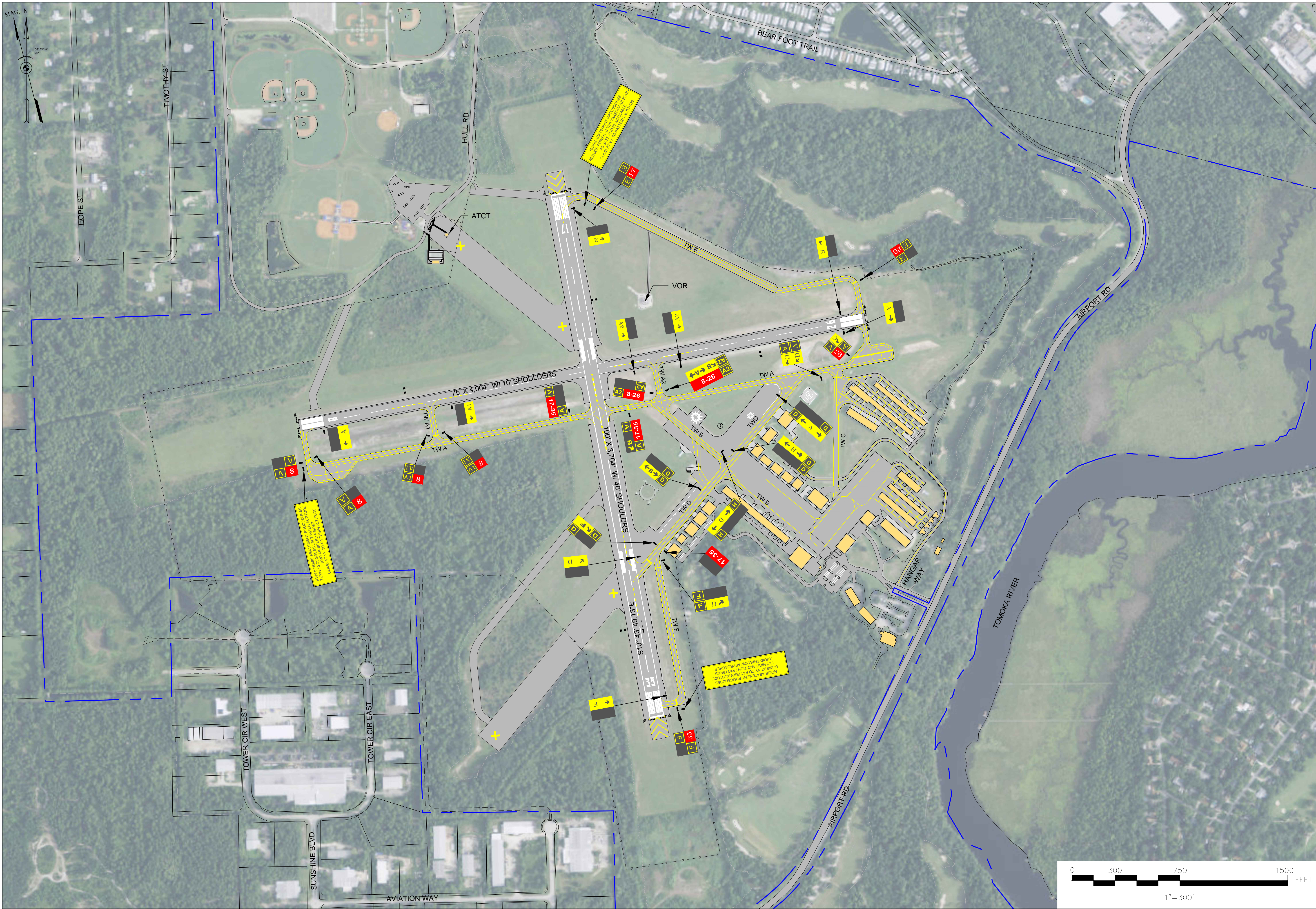


Drawing name: H:\307101\Draws\Contract\A111_Sign and Marking Plans.dwg Nov 10, 2015 - 3:49pm



REV. NO.	DATE	DESCRIPTION	BY

AIP NO.: 3-12-0058-17-2014
 PROJ. NO.: 307101
 DRAWN: JLC
 DESIGN: MTO
 CHECKED: ERM
 DATE: OCTOBER 2015

SHEET TITLE
SIGN AND MARKING PLAN

City of Ormond Beach
 ORMOND BEACH MUNICIPAL AIRPORT
 ORMOND BEACH, FLORIDA

Hoyle Tanner
 Associates, Inc.
 95 E. Mitchell Hammock Road,
 Suite 200 Oviedo, FL 32765
 Office PH: 407-380-1919
 Fax: 407-380-1830
 www.hoyletanner.com