



Jeffco Advisory Board Business Meeting

July 13, 2022 5:00PM

**Mt. Evans Room of the RMMA Terminal (11755 Airport Way, Broomfield, CO)
or virtual via WebEx**

Agenda

- I. Call to Order
- II. Roll Call
- III. Public Comment – 3 minutes per speaker
- IV. Approval of Minutes – 4/13/2022 regular meeting
- V. Business Items
 - a. JSX preparations and impacts
- VI. Adjournment

Public WebEx log-in details:

When it's time, start or join the WebEx meeting from here:

<https://jeffco.webex.com/jeffco/onstage/g.php?MTID=e566d6e2e9a0486661ee5c9c51cd60145>

You may also dial in via:

+1-408-418-9388 United States Toll

Access Code: 2486 788 3078

Public Comment Details:

Public Comment will be taken on a first-come, first-serve basis at a maximum of 3 minutes per speaker. If you would like to provide comments virtually to the advisory board, you may do so by using the WebEx chat function to notify the host. Please provide your first and last name, and address. You will receive confirmation if you have been added to the public comment list.

Please note that all microphones are muted upon entry to the virtual meeting. During Public Comment, your name will be called in the order it was received. Your microphone will be unmuted once your name has been called.

Public Comment Details:

Public Comment will be taken on a first-come, first-serve basis at a maximum of 3 minutes per speaker. If you would like to provide virtual comments to the Airport Advisory Board, you may do so by using the WebEx chat function to notify the host. Please provide your first and last name, and address. You will receive confirmation if you have been added to the public comment list.

Please note that all microphones are muted upon entry to the virtual meeting. During Public Comment, your name will be called in the order it was received. Your microphone will be unmuted once your name has been called.



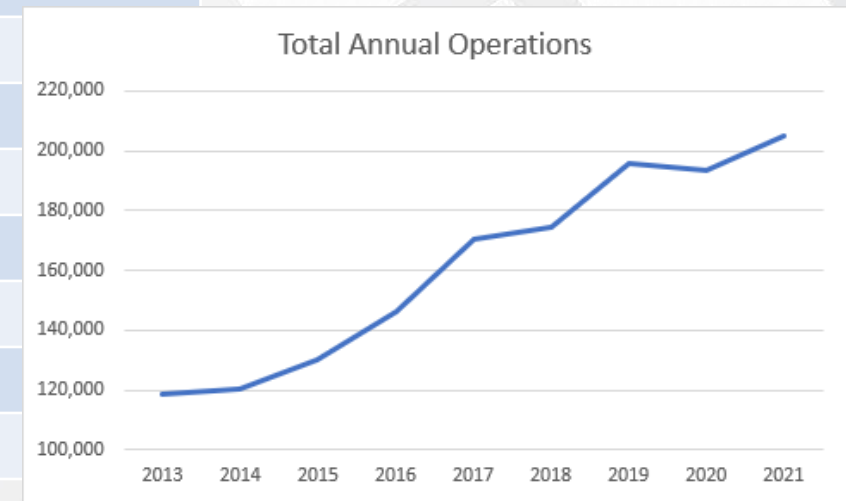
AAB – 7.13.2022

Airport Operations

RMMA Monthly Operations*

2014-2022

	2017	2018	2019	2020	2021	2022	YOY YTD Diff
Jan	10,010	13,334	13,010	16,331	13,801	14,191	2.83%
Feb	9,631	8,628	10,826	11,013	9,335	16,587	33.03%
Mar	13,389	15,659	15,876	12,415	15,610	21,995	36.20%
Apr	14,126	13,939	15,401	6,565	15,002	22,774	41.01%
May	15,604	16,408	13,467	18,393	15,850	19,390	36.76%
June	19,915	15,862	17,094	22,541	17,658		
July	16,652	17,658	21,464	21,171	18,984		
Aug	16,612	17,558	21,780	22,055	21,891		
Sep	14,819	16,918	19,996	21,375	20,786		
Oct	14,381	14,299	17,868	19,149	22,161		
Nov	13,597	12,012	13,919	10,075	18,103		
Dec	11,817	12,456	15,061	12,155	15,866		
TOTALS	170,553	174,731	195,762	193,238	205,047		



JSX

- Public charter service begins operations out of terminal on August 4
- Four flights daily
 - 2x to Burbank, 2x to Dallas-Love
- “Poor man’s private charter”
 - 30 seat Embraers
 - Hassle-free, TSA accepted security protocol
 - Convenient parking
 - Check-in 20 minutes prior to departure



JSX Product

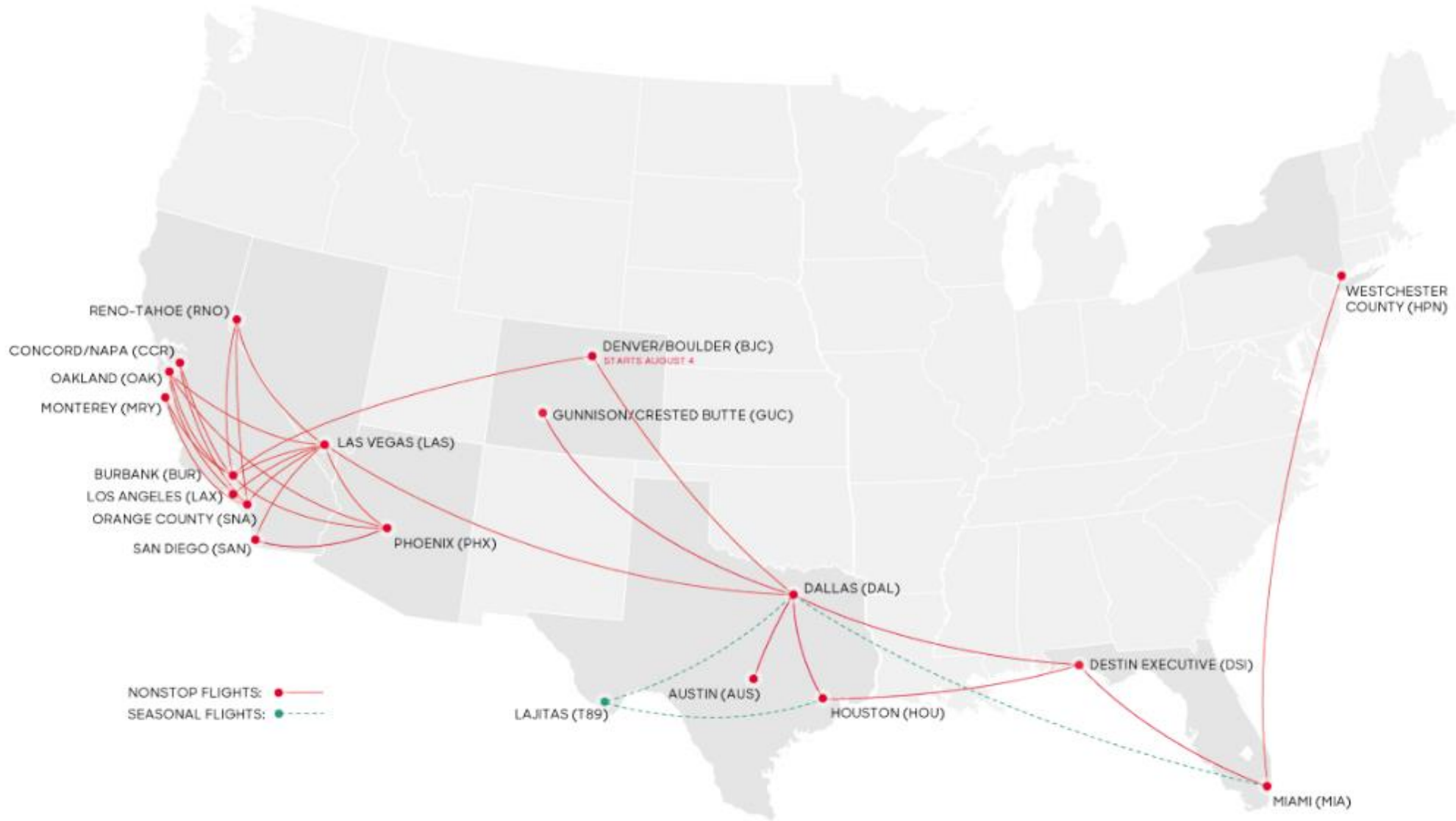


The Experience

No crowds. Private terminals. 30-seat jets with business class legroom. Free snacks and drinks.

Two free checked bags. Contact-less check-in. This is flying redesigned.

JSX Route Map



JSX

- Benefits:
 - Will provide \$1M in annual AIP entitlement funding based on passenger enplanements
 - No CIP needs
- Impacts
 - Parking
 - Terminal
 - Ramp



Parking – JSX Airlines (4 daily flights)



Parking – Long-term lot vs. short-term

- Long-term (gravel) lot becomes a paid lot at \$11/day

HOW IT WORKS

Text P-Code or Scan QR Code & Click the Link

Enter License Plate, Time & Payment

Confirm ZIP Code & Click PAY

THE SIMPLEST MOBILE PARKING PAYMENT SOLUTION

- Short-term lot becomes no overnight (with towing enforcement)

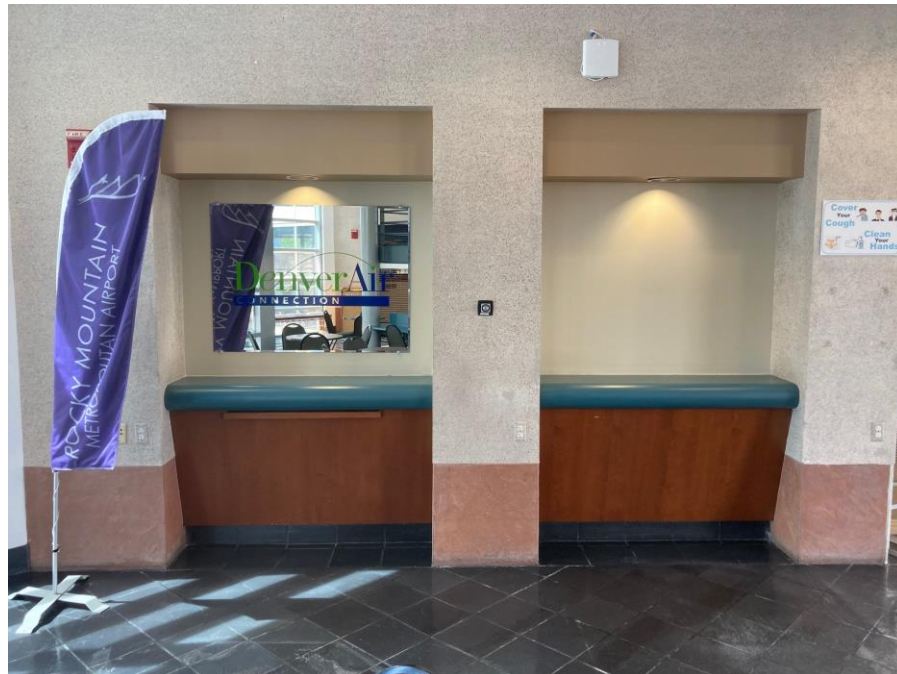


Parking – Logistics

- Rental car agencies expanding fleet
 - Go Rentals adding 25 vehicles
- Airport will work with Airport Way tenants to protect other parking lots
- 24-Hour Ops Number = 720-352-0395

Airport Terminal Impacts

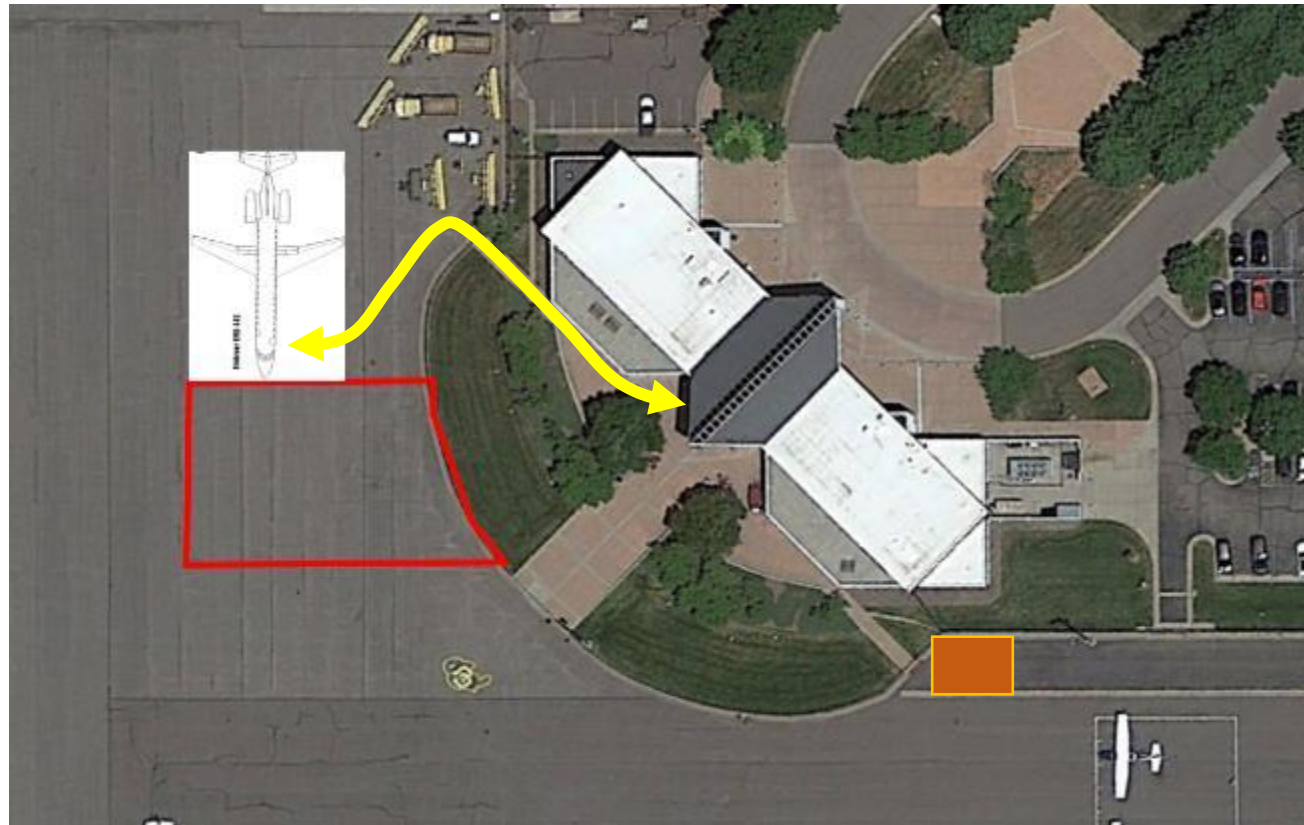
- JSX kiosk in place of Denver Air Connection
- Security screeners installed next to kiosk



Airport Ramp Impacts



- Reserved space north of US Customs box
- No more vehicle parking adjacent to the fence



Questions?

Paul Anslow, Airport Director
303-271-4851
panslow@flyrmma.com

