

ROCKY MOUNTAIN METROPOLITAN AIRPORT

Noise Report 2016

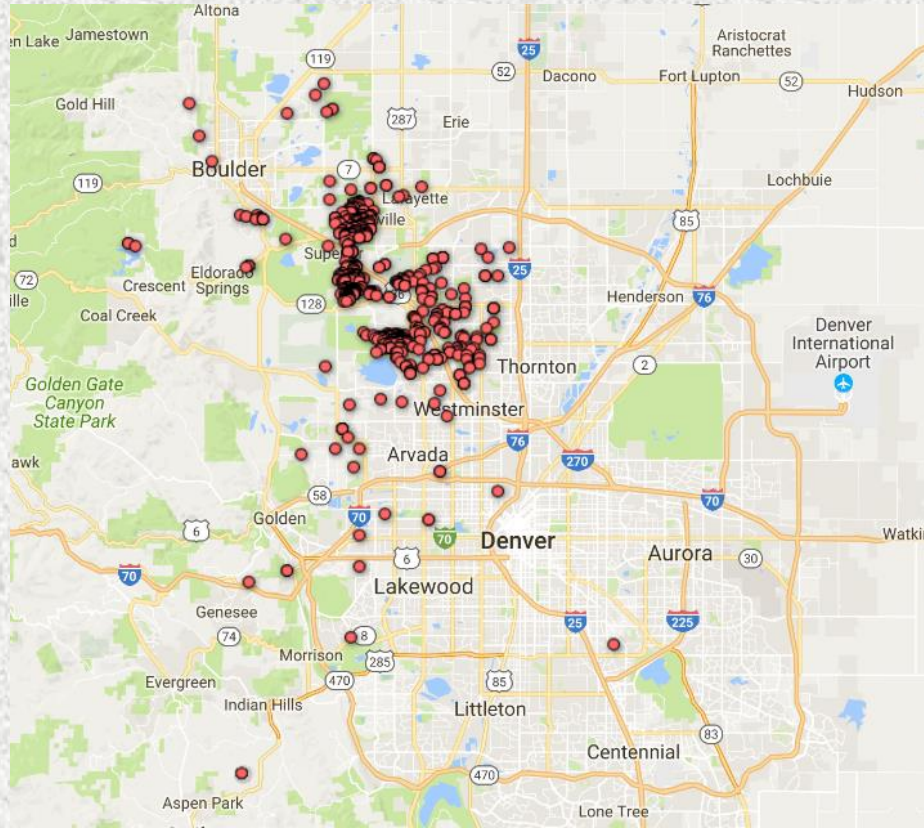
Introduction

With the intent to minimize the impact of aircraft noise on the surrounding communities, Rocky Mountain Metropolitan Airport developed this report focusing on information collected from the noise complaint hotline (303) 271-4874 and on our website at www.flyrmma.com. The statistical information contained in this report is made available to pilots, airport users, and surrounding communities via the Airport's website, and is updated quarterly.

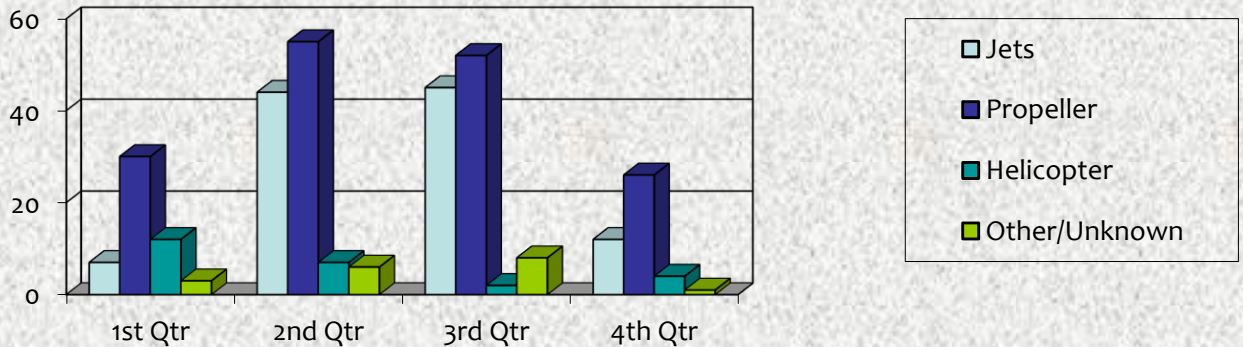
City	Quarterly Complaints					Household Complaints				
	1 st	2 nd	3 rd	4 th	Total YTD	1 st	2 nd	3 rd	4 th	Total YTD
Arvada	0	0	2	0	2	0	0	2	0	2
Boulder	1	3	6	2	12	1	2	4	2	6
Broomfield	11	10	4	3	28	3	4	4	3	13
Denver	1	0	0	0	1	1	0	0	0	1
Louisville	15	13	20	2	50	1	8	10	2	18
Lafayette	0	2	1	1	4	0	1	1	1	3
Thornton	0	0	0	0	0	0	0	0	0	0
Superior	19	64	69	31	183	4	26	12	5	36
Westminster	5	20	6	4	35	4	13	6	4	27
Other	0	0	0	0	0	0	0	0	0	0
Total	52	112	108	43	315	14	54	39	17	124

	Annual 2015	2016
Aircraft Operations	129,907	142,663
Noise Complaints	449	315

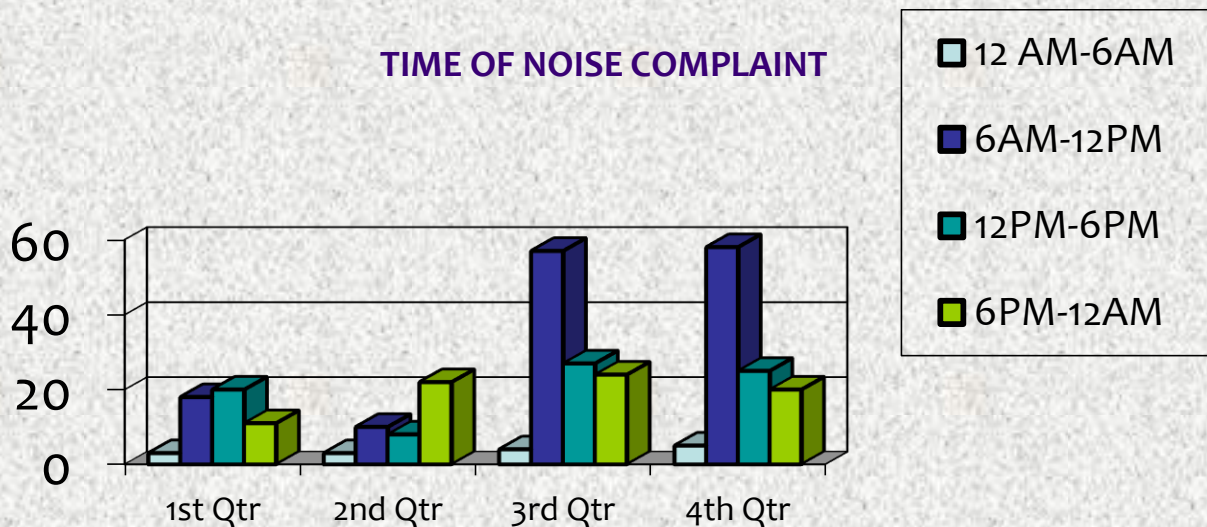
LOCATION OF 2016 NOISE COMPLAINTS IN RELATION TO AIRPORT



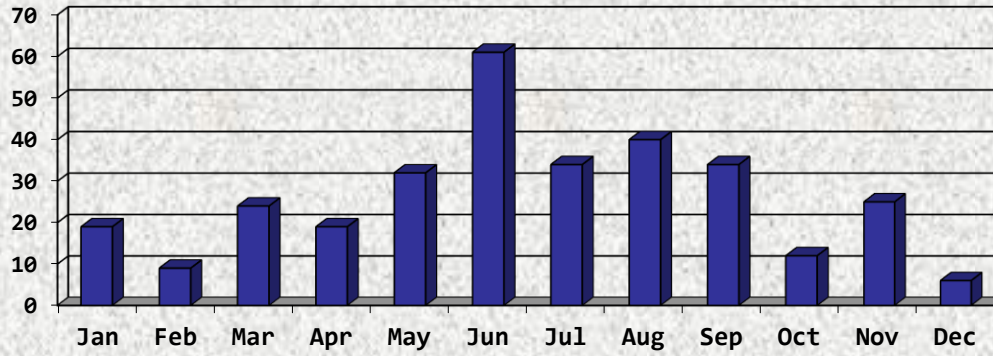
TYPE OF AIRCRAFT GENERATING COMPLAINTS



TIME OF NOISE COMPLAINT



NOISE COMPLAINTS BY MONTH



AIRCRAFT OPERATIONS BY MONTH

