

ROCKY MOUNTAIN METROPOLITAN AIRPORT

Noise Report 2017

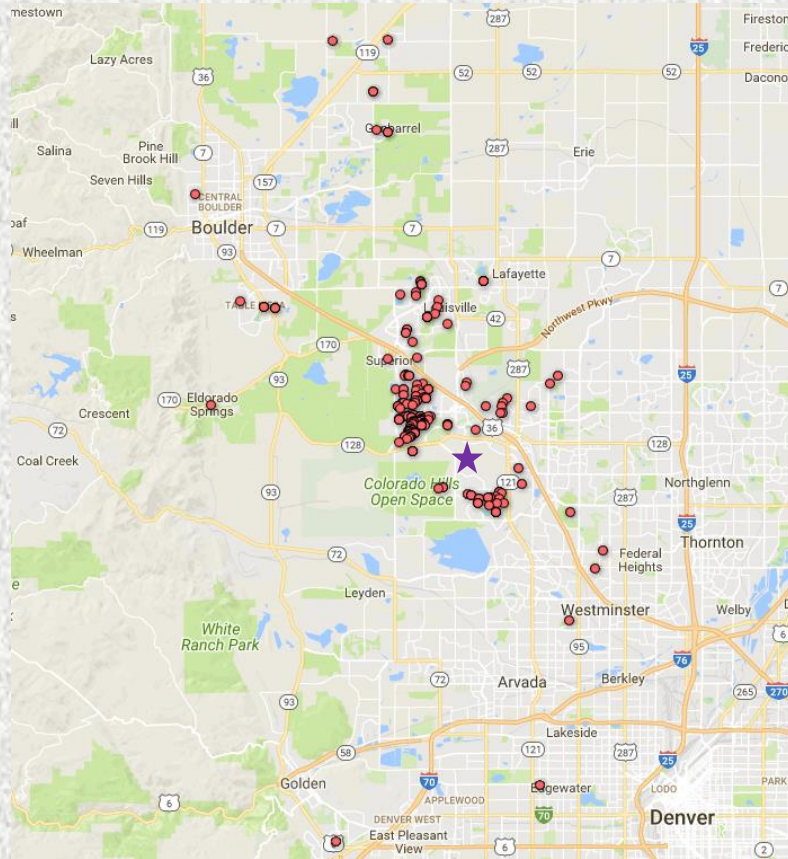
Introduction

With the intent to minimize the impact of aircraft noise on the surrounding communities, Rocky Mountain Metropolitan Airport developed this report focusing on information collected from the noise complaint hotline (303) 271-4874 and on our website at www.flyrmma.com. The statistical information contained in this report is made available to pilots, airport users, and surrounding communities via the Airport's website, and is updated quarterly.

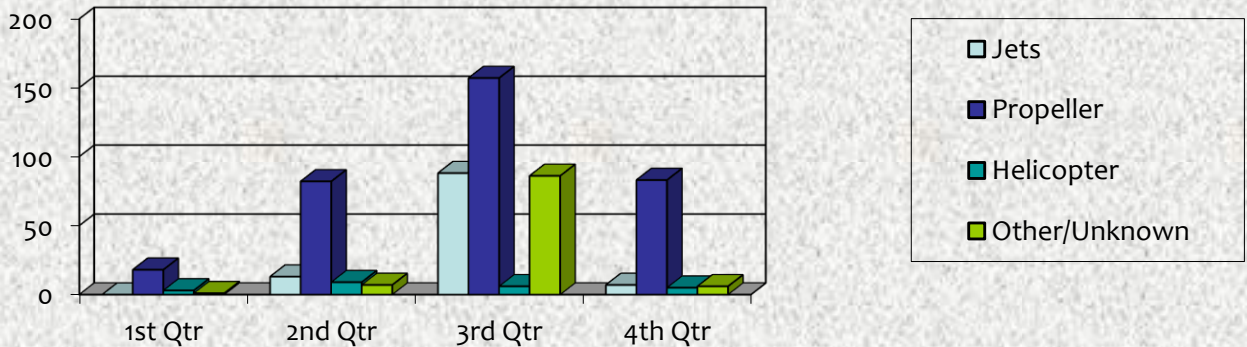
City	Quarterly Complaints					Household Complaints				
	1 st	2 nd	3 rd	4 th	Total YTD	1 st	2 nd	3 rd	4 th	Total YTD
Arvada	1	0	0	0	1	1	0	0	0	1
Boulder	0	6	6	0	12	0	4	3	0	6
Broomfield	9	19	47	65	140	3	8	12	2	21
Louisville	1	6	50	0	57	1	5	13	0	17
Lafayette	0	0	6	9	15	0	0	1	1	1
Littleton	5	6	7	7	25	1	1	2	2	3
Thornton	0	0	0	0	0	0	0	0	0	0
Superior	4	64	198	10	276	3	31	54	6	82
Westminster	0	10	17	7	34	0	7	11	4	20
Other	2	1	5	3	11	2	1	5	3	10
Total	22	112	336	101	571	11	57	101	18	161

	Annual 2016	Annual 2017
Aircraft Operations	142,663	167,363
Noise Complaints	315	571

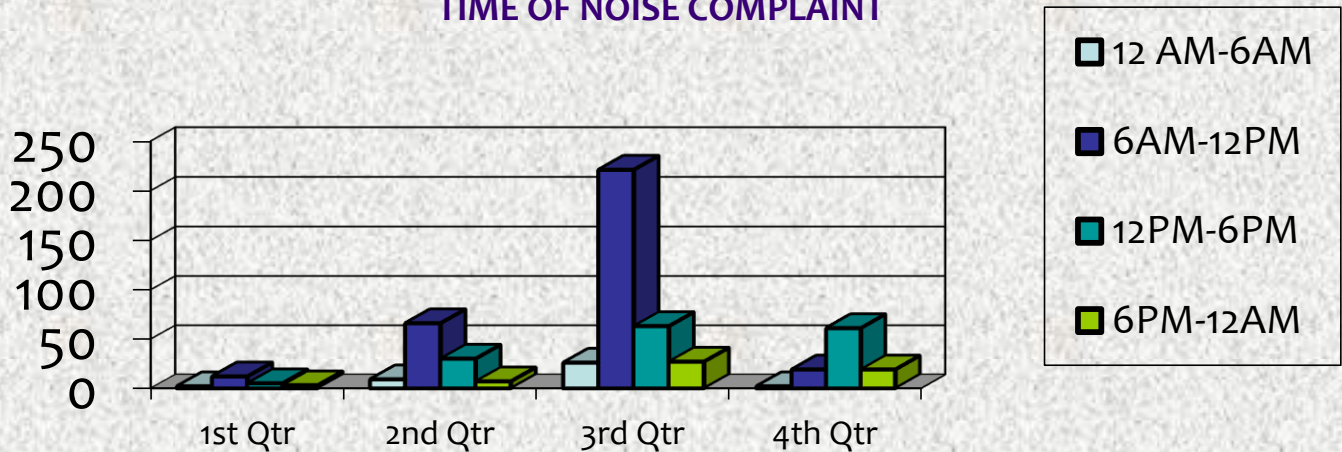
LOCATION OF 2017 NOISE COMPLAINTS IN RELATION TO AIRPORT



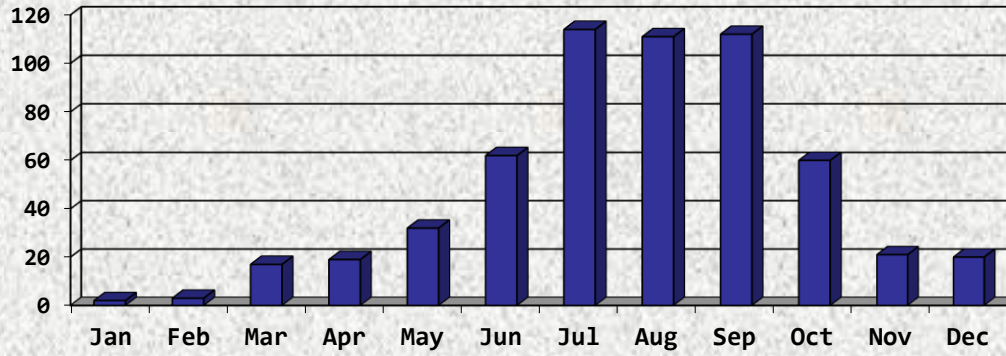
TYPE OF AIRCRAFT GENERATING COMPLAINTS



TIME OF NOISE COMPLAINT



NOISE COMPLAINTS BY MONTH



AIRCRAFT OPERATIONS BY MONTH

