

ROCKY MOUNTAIN METROPOLITAN AIRPORT

Noise Report 2019

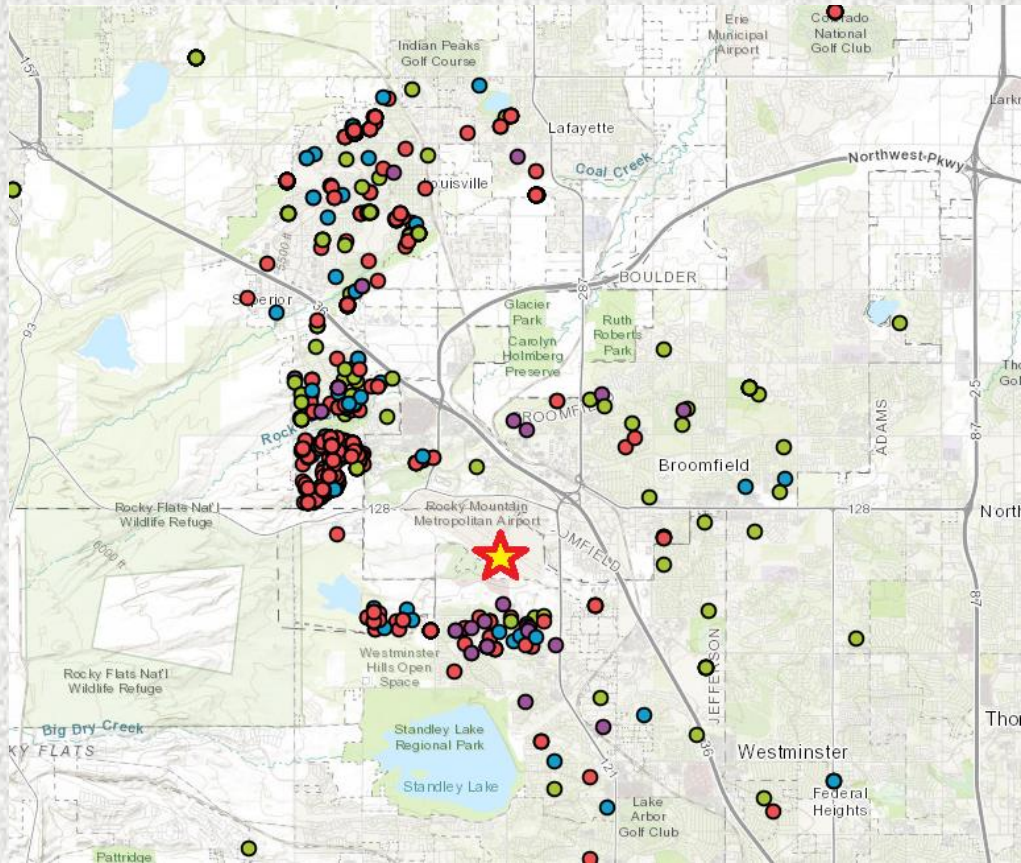
Introduction

With the intent to minimize the impact of aircraft noise on the surrounding communities, Rocky Mountain Metropolitan Airport developed this report focusing on information collected from the noise complaint hotline (303) 271-4874 and on our website at www.flyrmma.com. The statistical information contained in this report is made available to pilots, airport users, and surrounding communities via the Airport's website, and is updated quarterly.

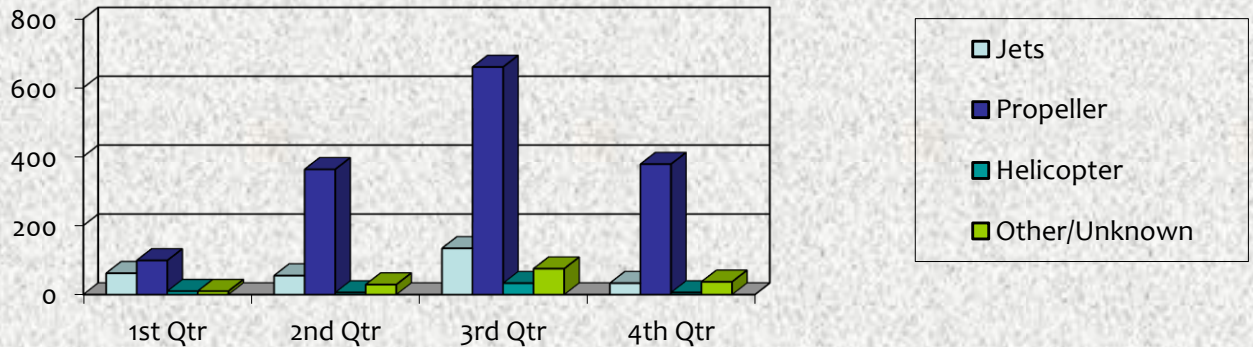
City	Quarterly Complaints					Household Complaints				
	1 st	2 nd	3 rd	4 th	Total YTD	1 st	2 nd	3 rd	4 th	Total YTD
Arvada	4	0	2	1	7	4	0	2	1	7
Boulder	22	18	68	32	140	2	4	5	2	9
Broomfield	26	7	34	36	103	15	7	16	13	46
Louisville	18	224	170	43	455	6	31	41	15	65
Lafayette	2	18	19	7	46	1	3	9	1	9
Littleton	0	2	0	0	2	0	2	0	0	2
Erie	0	8	9	1	18	0	1	1	1	1
Superior	88	166	534	303	1091	31	51	114	22	157
Westminster	19	9	59	28	115	17	6	25	6	45
Other	1	5	9	6	21	1	4	7	1	12
Total	181	457	905	457	2000	77	109	220	62	353

	Annual 2018	Annual 2019
Aircraft Operations	172,500	192,475
Noise Complaints	1735	2000

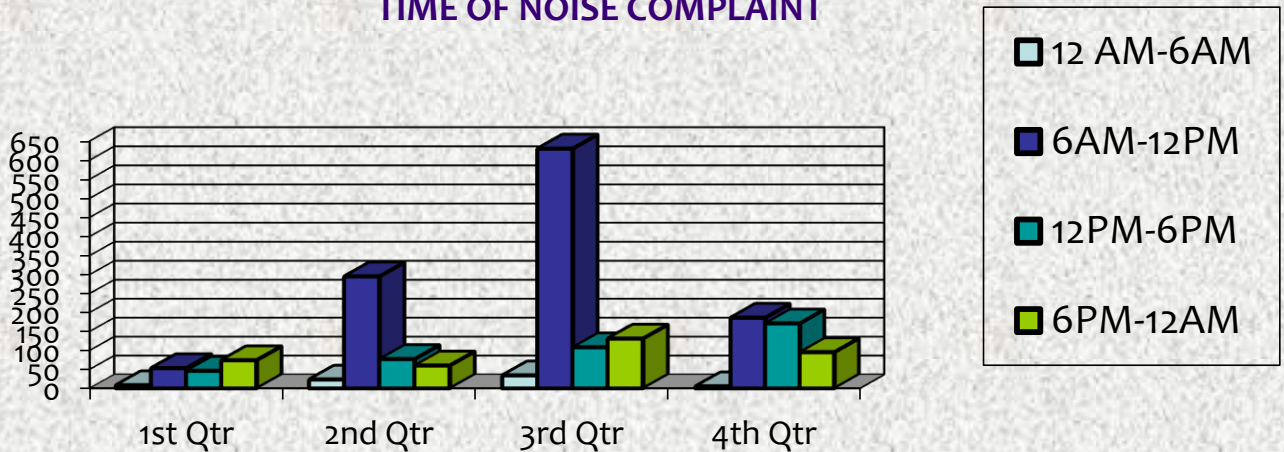
LOCATION OF 2019 NOISE COMPLAINTS IN RELATION TO AIRPORT



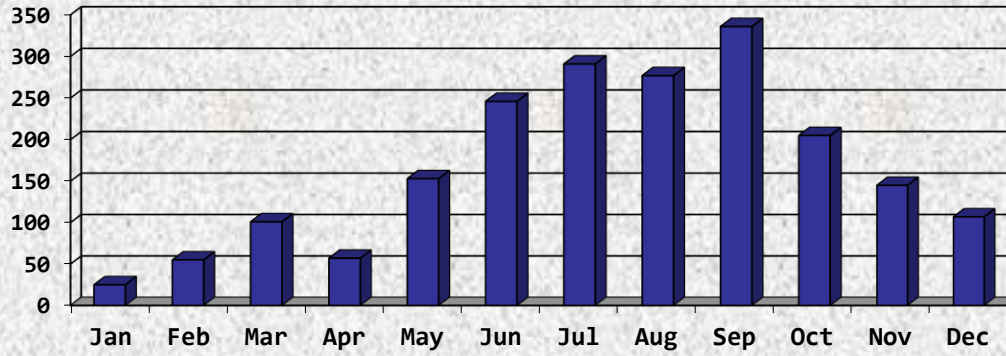
TYPE OF AIRCRAFT GENERATING COMPLAINTS



TIME OF NOISE COMPLAINT



NOISE COMPLAINTS BY MONTH



AIRCRAFT OPERATIONS BY MONTH

